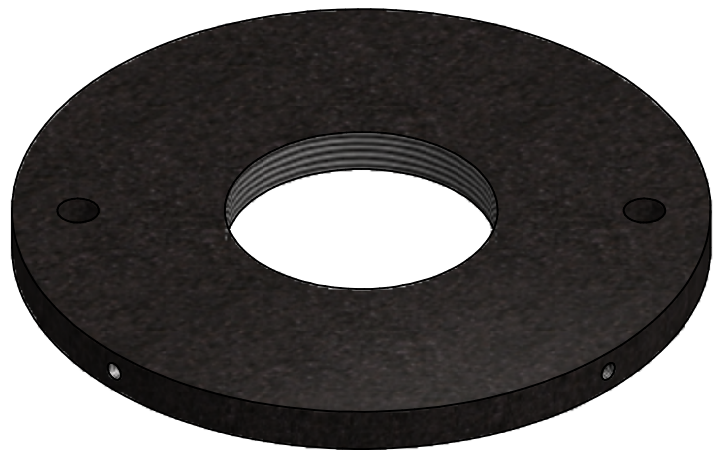
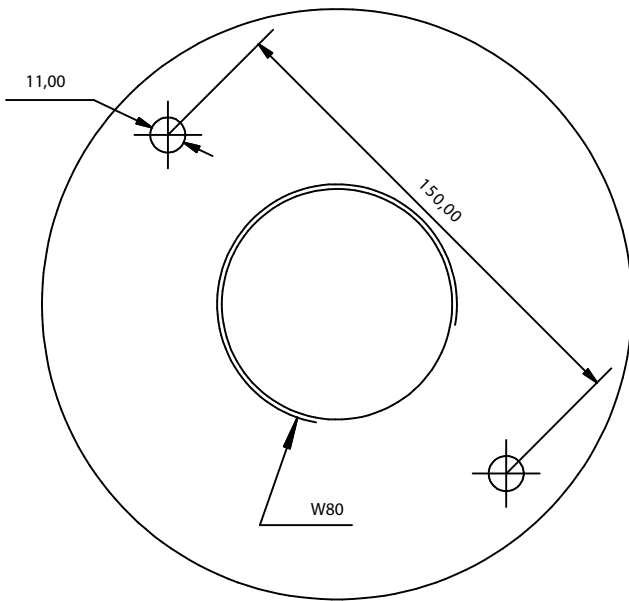
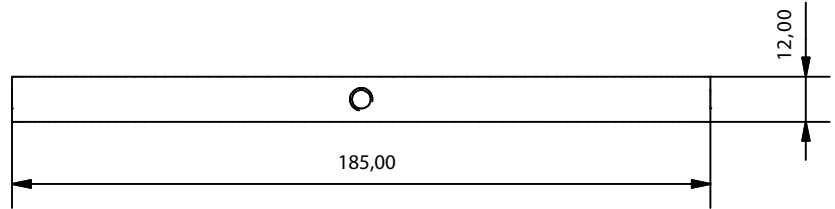


# W80 FLANGE FOR CYLINDERS

## BRW80CO-1



Specifications	
Name	Value
Body finished	Black paint (RAL 9005)
Weight	2000 g

Description: Element used to anchor the protective cap of the pilot cylinders and to suspend the cylinder in systems with continuous weighing control.

Code sheet:	Group sheet:	Reference:	Drawn:	Date:	Revised:	Date:	Review:	Format:
AEX-FTC-02-015	CO2	BRW80CO-1	DCM	1/11/2016	MRC	11/11/2016	1	A4